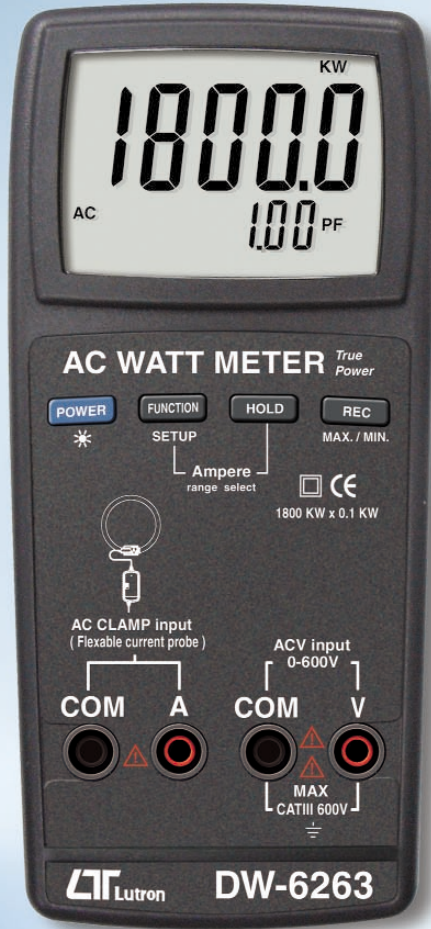


Precision DC Watt meter
Precision AC power meter



Holster HS-03



with 3000A flexible clamp
AC WATT METER

Model : DW-6263

- * True power measurement.
- * True RMS measurement for ACV, ACA.
- * AC Watt :
 - 0 - 18000 W x 1 W
 - 0 - 180.00 KW x 0.01 KW
 - 0 - 1800.0 KW x 0.1 KW
- * Power factor : 0.01 to 1.00 x 0.01 PF.
- * ACV : 0 - 600 V x 0.1 V.
- * ACA :
 - 0 - 30 A x 0.01 A.
 - 0 - 300 A x 0.1 A.
 - 0 - 3000 A x 1 A.
- * ACV input impedance : 10 MΩ.
- * 3000 Amp flexible clamp (CP-3001) is included.
Flexible probe 600 mm x 14.5 mm DIA.
- * Data hold, Record (Max., Min).
- * LCD with Backlight can be easy readout.
- * USB/RS232 Computer interface.
- * Optional data acquisition software, SW-U801-WIN.
- * Optional Excel data acquisition software, SW-E802.
- * Optional USB cable , USB - 01.
- * Optional SD card data logger, DL-9602SD.

data logger with 50 mS sampling time
DC WATT METER

Model : DW-6064

- * DC power measurement.
- * DC Watt :
 - 0-120.00 W x 10 mW .
 - 120 W - 600.0 W x 0.1 W.
- * DCV : 0 - 60 V x 0.01 V.
- * DCA :
 - 0 - 2 A x 0.001 A.
 - 2 - 10 A x 0.01 A.
- * DCV input impedance : 10 MΩ.
- * Fast data logger with 50 mS sampling time.
- * Data hold, Record (Max., Min).
- * LCD with Backlight can be easy readout.
- * USB/RS232 Computer interface.
- * Optional USB cable , USB - 01 .
- * Optional data acquisition software, SW-U801-WIN.
- * Optional Excel data acquisition software, SW-E802.
- * Optional SD card data logger, DL-9602SD.